



ARF4 Polyclonal Antibody

Catalog No	YP-Ab-16128
Isotype	IgG
Reactivity	Human;Rat;Mouse;
Applications	WB;IHC;IF;ELISA
Gene Name	ARF4
Protein Name	ADP-ribosylation factor 4
Immunogen	The antiserum was produced against synthesized peptide derived from human ARF4. AA range:71-120
Specificity	ARF4 Polyclonal Antibody detects endogenous levels of ARF4 protein.
Formulation	Liquid in PBS containing 50% glycerol, 0.5% BSA and 0.02% sodium azide.
Source	Polyclonal, Rabbit,IgG
Purification	The antibody was affinity-purified from rabbit antiserum by affinity-chromatography using epitope-specific immunogen.
Dilution	WB: 1/500 - 1/2000. IHC: 1/100 - 1/300. ELISA: 1/40000.. IF 1:50-200
Concentration	1 mg/ml
Purity	≥90%
Storage Stability	-20°C/1 year
Synonyms	ARF4; ARF2; ADP-ribosylation factor 4
Observed Band	25kD
Cell Pathway	Golgi apparatus. Membrane ; Lipid-anchor .
Tissue Specificity	Bone marrow,Brain,Cerebellum,Placenta,Skin,Urinary bladder,
Function	caution:Was originally thought to be ARF2.,function:GTP-binding protein that functions as an allosteric activator of the cholera toxin catalytic subunit, an ADP-ribosyltransferase. Involved in protein trafficking; may modulate vesicle budding and uncoating within the Golgi apparatus.,similarity:Belongs to the small GTPase superfamily. Arf family.,
Background	ADP ribosylation factor 4(ARF4) Homo sapiens This gene is a member of the human ARF gene family whose members encode small guanine nucleotide-binding proteins that stimulate the ADP-ribosyltransferase activity of cholera toxin and play a role in vesicular trafficking and as activators of phospholipase D. The gene products include 5 ARF proteins and 11 ARF-like proteins and constitute one family of the RAS superfamily. The ARF proteins are categorized as class I, class II and class III; this gene is a class II member. The members of each class share a common gene organization. The ARF4 gene spans approximately 12kb and contains six exons and five introns. This gene is



the most divergent member of the human ARFs. Conflicting map positions at 3p14 or 3p21 have been reported for this gene. [provided by RefSeq, Jul 2008],

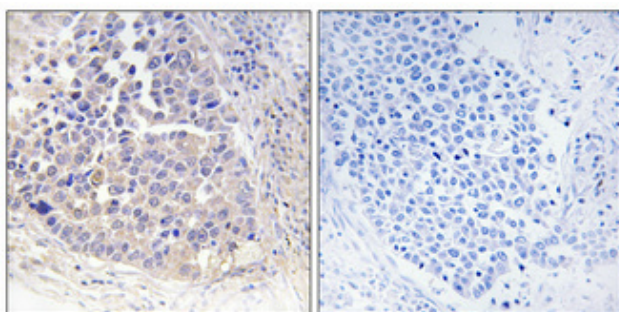
matters needing attention

Avoid repeated freezing and thawing!

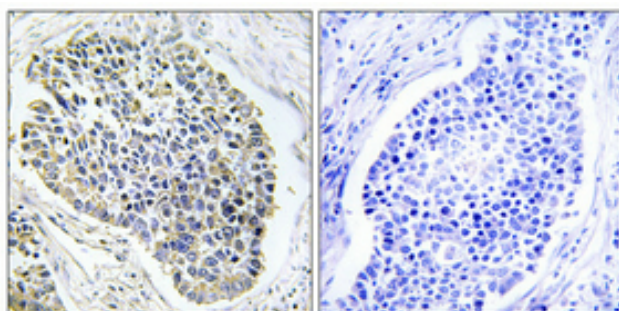
Usage suggestions

This product can be used in immunological reaction related experiments. For more information, please consult technical personnel.

Products Images

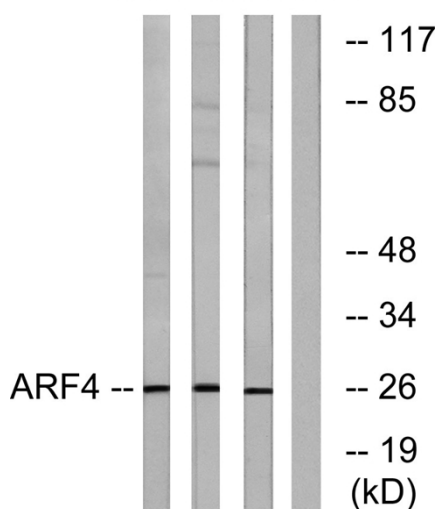


Immunohistochemical analysis of paraffin-embedded Human lung cancer. Antibody was diluted at 1:100(4° overnight). High-pressure and temperature Tris-EDTA, pH8.0 was used for antigen retrieval. Negative contrl (right) obtained from antibody was pre-absorbed by immunogen peptide.



Immunohistochemical analysis of paraffin-embedded Human lung cancer. Antibody was diluted at 1:100(4° overnight). High-pressure and temperature Tris-EDTA, pH8.0 was used for antigen retrieval. Negative contrl (right) obtained from antibody was pre-absorbed by immunogen peptide.

LOVO K562 HT-29 K562



Western blot analysis of lysates from LOVO, K562, and HT-29 cells, using ARF4 Antibody. The lane on the right is blocked with the synthesized peptide.